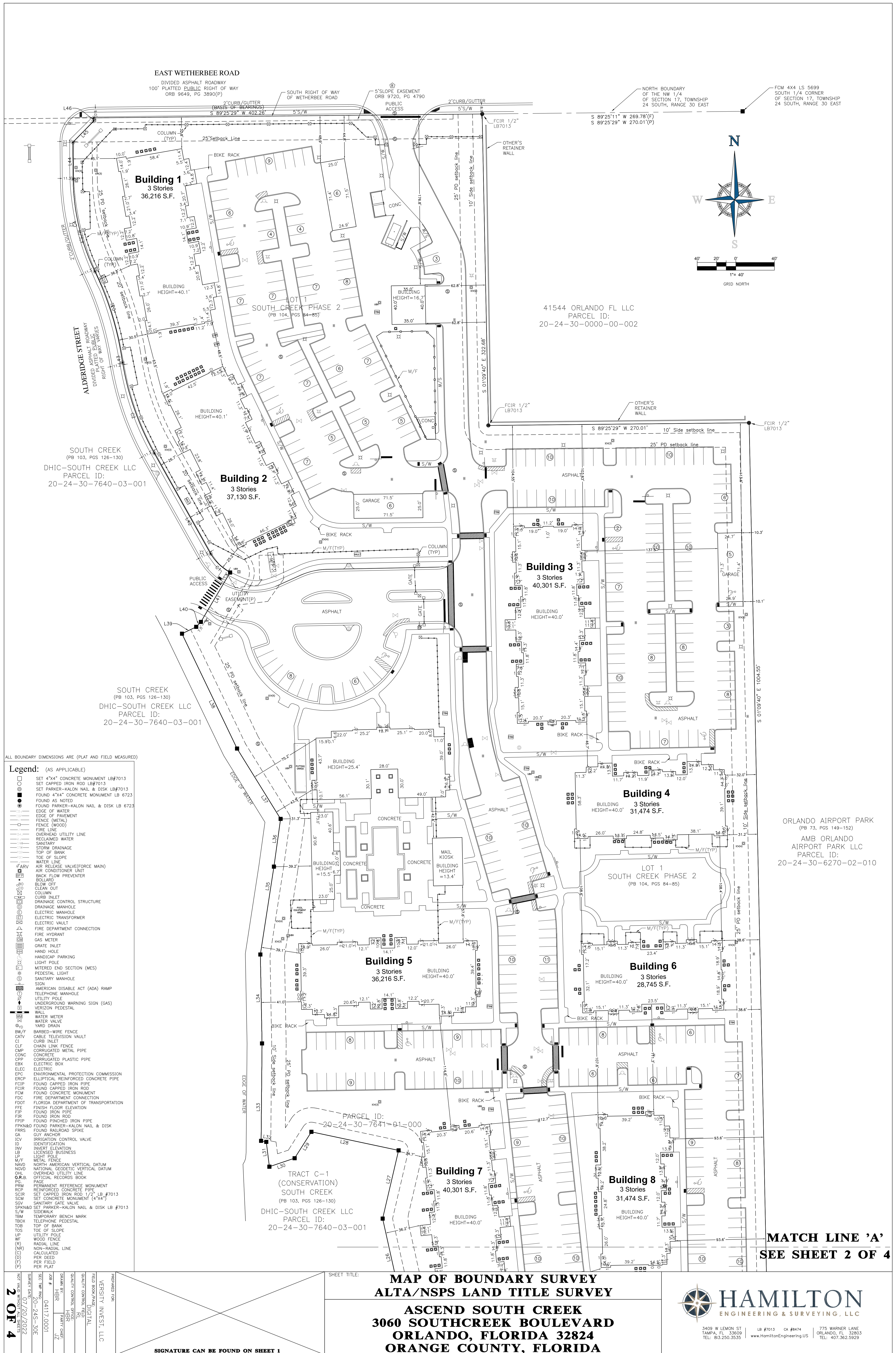
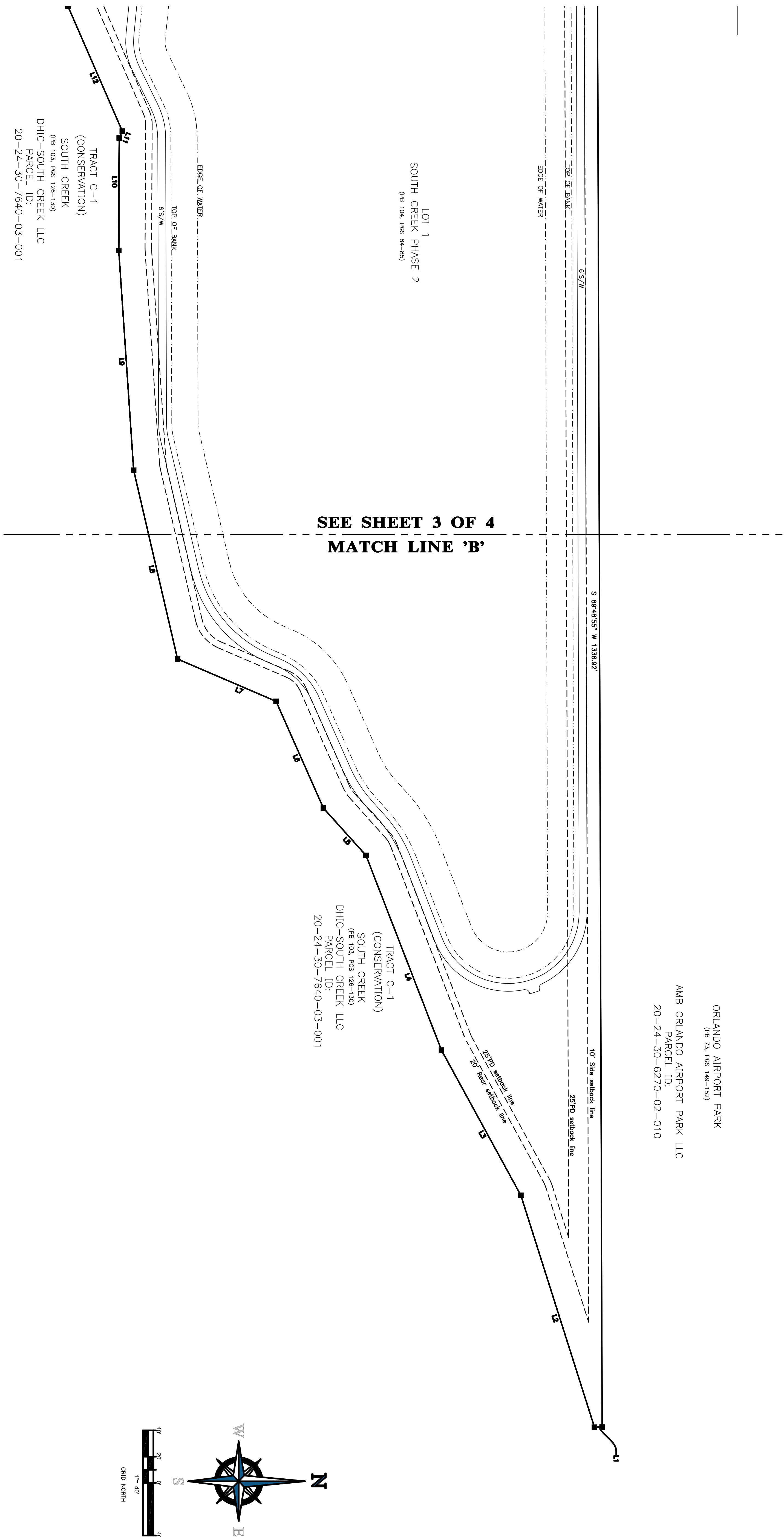


[illegible]





LINE TABLE			
LINE#	DIRECTION	LENGTH	
L1	S 01°00'39" E	5.86'	
L2	S 72°23'08" W	185.60'	
L3	S 61°46'20" W	125.85'	
L4	S 68°48'48" W	158.55'	
L5	S 48°01'33" W	42.45'	
L6	S 67°52'22" W	88.80'	
L7	S 23°15'19" W	81.62'	
L8	S 78°54'14" W	147.41'	
L9	S 67°05'40" W	161.57'	
L10	N 88°45'40" W	85.63'	
L11	N 66°14'01" W	5.74'	
L12	S 66°27'28" W	123.60'	
L13	S 68°02'18" W	105.87'	
L14	N 72°14'57" W	97.28'	
L15	S 64°13'58" W	66.83'	
L16	N 84°54'58" W	128.87'	
L17	N 40°01'52" W	81.54'	
L18	N 62°28'54" W	94.13'	
L19	N 46°47'35" W	113.53'	
L20	N 36°51'26" W	113.85'	

LINE TABLE		
LINE#	DIRECTION	LENGTH
L21	N 142°56' E	82.78
L22	N 69°54' W	78.38*
L23	N 28°44'36" W	15.82*
L24	N 61°32'56" W	44.20*
L25	N 42°30'07" E	40.27*
L26	N 12°30'37" W	71.37*
L27	N 13°08'29" E	72.56*
L28	N 77°59'44" W	82.32*
L29	S 32°22'46" W	32.38*
L30	S 71°24'56" W	27.58*
L31	N 07°07'42" W	25.91*
L32	N 78°47'10" W	5.46*
L33	N 00°32'27" E	100.85*
L34	N 01°04'56" W	92.10*
L35	N 08°46'32" E	92.11*
L36	N 07°51'26" E	49.91*
L37	N 31°44'15" W	88.68*
L38	N 26°37'13" W	131.95*
L39	N 65°23'47" E	16.34*
L40	N 43°26'47" E	7.09*

LINE TABLE		
LINE#	DIRECTION	LENGTH
L41	N 30°35'53" E	59.44'
L42	N 29°15'33" W	119.51'
L43	N 09°15'33" W	8.03'
L44	N 00°33'36" W	38.05'
L45	N 44°23'27" E	31.09'
L46	N 00°33'36" W	3.15'

CURVE#	CURVE TABLE		
	RADIUS	CHORD BEARING	CHORD LENGTH
C1	53.98'	N 46°16'08" W	27.95'
C2	286.00'	N 19°15'33" W	98.33'
C3	314.00'	S 17°34'30" E	90.83'
C4	224.00'	N 13°13'32" W	96.23'
			90.03'
			22°19'54"

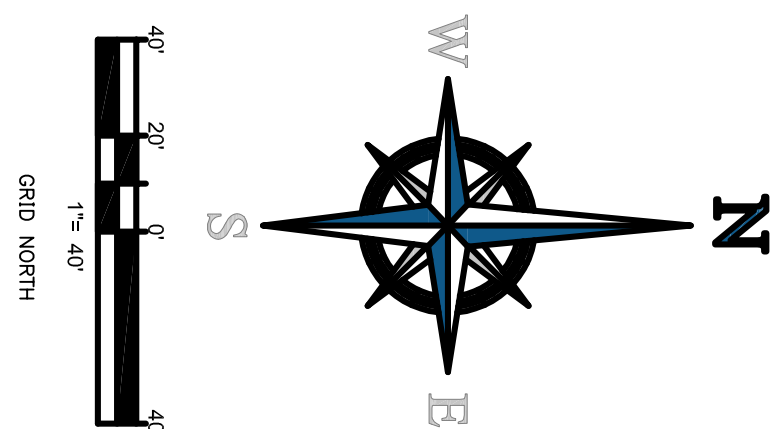
[illegible]

Exhibit A

To: Walker & Dunlop, LLC

Federal Home Loan Mortgage Corporation, it's successors and/or assigns,

Versity Invest, LLC, A Delaware Limited Liability Company,

Apex South Creek, DST, a Delaware Statutory Trust,

Apex South Creek Leaseco, LLC, a Delaware Limited Liability Company

Old Republic National Title Insurance Company

DHI Title of Florida, LLC

This is to certify that this map or plat and the survey on which it is based were made in accordance with the 2021 Minimum Standard Detail Requirements for ALTA/NSPS Land Title Surveys, jointly established and adopted by ALTA and NSPS, and includes Items 1, 2, 3, 4, 6(a), 6(b), 7(a), 7(b)(1), 7(c), 8, 9, 10, 13, 14, 16, 17, 18, and 19 of Table A thereof. The field work was completed on 07/20/2022.

Date of Plat or Map: 09/23/2022

(Surveyor's signature, printed name and seal with Registration/License Number)

HARRY B. ROGERS 111 PSM
#6418
11/03/2022



A handwritten signature in black ink, appearing to read "H B R III".